

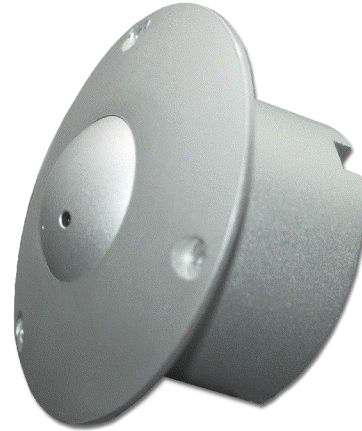
SLC-151C

Flush Mount Color Ball Camera

security labs

Features

- Camera type: 1/3" Color Sony Super HAD CCD
- Video: NTSC, composite 1V p-p, 75 ohm
- Light sensitivity: 0.5 LUX
- Iris: auto electronic
- Resolution: 380 lines
- Lens: 3.7mm, fixed focus
- Power: 12VDC, 200 mA, 2.1mm jack
- Weight: 7 ounces
- Size: .5" protrusion from ceiling x 3" diameter
- Connections: RCA male video plug, 2.1mm DC jack
- Temperature Range: 10 to 130 Deg. F.
- Housing: Brushed aluminum bezel
- Kit includes:
 - 12VDC power supply
 - 50' video-power cable
 - Mounting hardware



SLC-151C Flush Mount Color Ball Camera

Designed for professional applications where both performance and appearance are critical, the SLC-151C incorporates the superior Sony Super HAD Color CCD images for superb image clarity.

Mounted in a ceiling area, the wide angle 3.7mm lens will display an image approx. 19' vertical x 26' horizontal at 20' from the camera. The viewing angle can be adjusted after installation by swiveling the ball camera inside it's housing. The visible portion of the SLC-151C protrudes only 1/2" after installation.

Exceptional image reproduction is enabled by the integrated Digital Signal Processor (DSP). The SLC-151C also features automatic gain control, auto electronic shutter, and auto white balance.